

2020 Design 10

ALL EDITIONS

Installation Guide



Welcome to 2020 Design

Thank you for choosing 2020 Design.

Please share your comments with us via our forum on 2020.net/Support.

Our best advertisement is our satisfied customers.

Contact Us

Technical Support: +1.866.697.2020

Telephone: + 514.332.4110

Fax: + 514.334.6043

Sales Toll free: + 1.866.698.2020

Fax Toll Free: + 1.866.621.2020

Company site: www.2020spaces.com

User site: www.2020.net

2020 Headquarters

20-20 Technologies Inc.

400 Armand-Frappier Boulevard

Suite 2020

Laval, (Québec) H7V 4B4

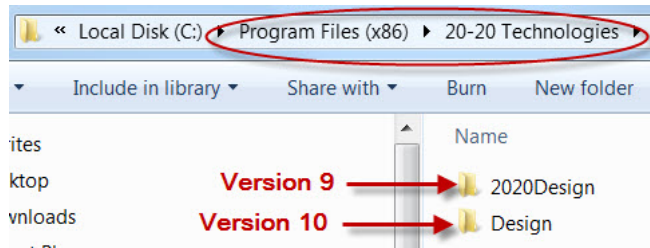
Canada

Contents

Notes to Users Upgrading from Version 9:	1
Installing 2020 Design	2
Starting 2020 Design	4
What's in the 2020 Program Group	4

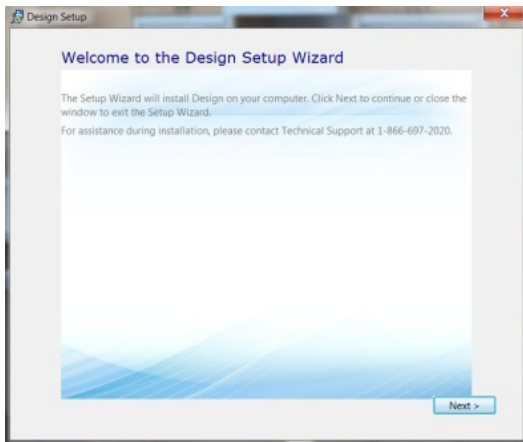
Notes to Users Upgrading from Version 9

- 2020 Design Version 10 can coexist with your previous version. To keep both versions, make sure you have the required available disk space (the complete Version 10 requires approximately 7 GB).
- The generic dplus and countertop wizard catalogs can now be downloaded from the MANUFACTURER UPDATES section of 2020.net.
- Version 10 is installed in a separate folder from Version 9, therefore, if you have Version 9 installed, you will end up with two versions of 2020. You may want to transfer your manufacturers and kit files to the version 10 environment once installed. Please contact customer support for help in doing this. When coexisting, Version 9 program files and Version 10 program files are copied to these folders (64-bit os):

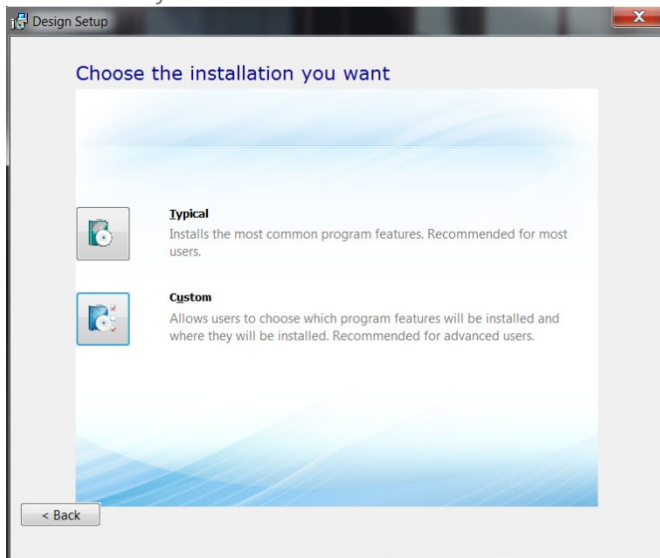


Installing 2020 Design

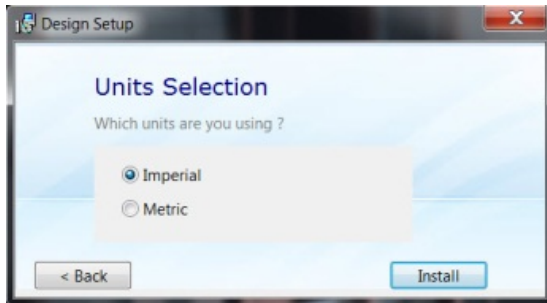
1. Close all applications.
2. Insert the 2020 Design DVD in the corresponding drive. Autorun starts the installation and displays the first 2020 Design install screen. If autorun is disabled on your computer, click **Start > Run** from the Windows menu bar. In the **Run** dialog, type the letter corresponding to your DVD drive followed by **\setup.exe** and click **ok**.
3. In the welcome screen, click **Next>**.



4. Read the License Agreement. Check **I accept the terms of this agreement** and then click **Next>**.
5. Click **Typical** to install all required components.
****Custom is for advance users****

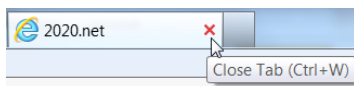
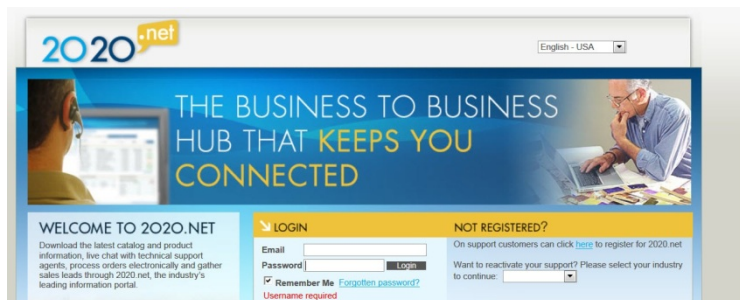


6. Select **Imperial** or **Metric** system units to define how measurements are displayed in 2020 Design and then click **Install**.



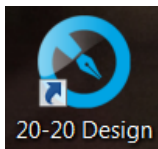
The Design Setup installs prerequisite software files and then installs 2020 Design. Installation time will depend on your system performance.

7. When the Installation Successful screen appears, click **Close**.
8. If you are a new 2020 Design user, register on 2020.net and then close this web page.

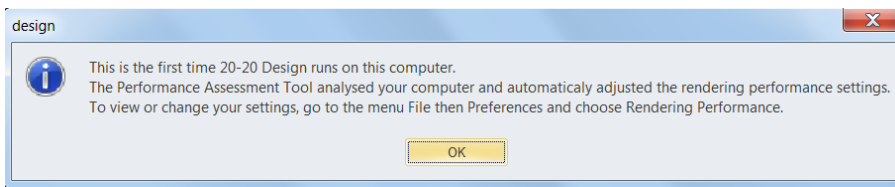


Starting 2020 Design

1. Make sure the 2020 Design USB security key is connected to your computer.
2. Click the 2020 Design shortcut on your desktop.

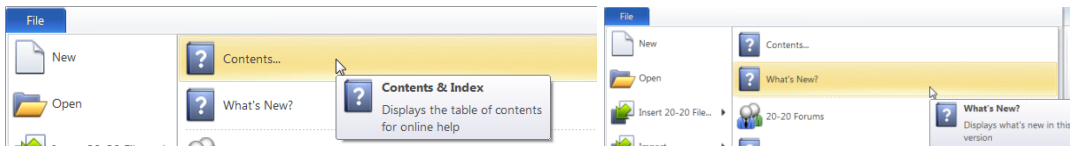


3. Click **OK** when this message appears.



4. To get training on 2020 Design, please visit our Training Center: <http://www.2020.net/20-20University/>.

You can use the 2020 Design Help file by clicking, **File > Help > Contents** or **File > Help > What's New** if you are upgrading to Version 10.



What's in the 2020 Program Group

Design	
20-20 Design Help File	Opens the help file on 20-20 Design
20-20 Design	Starts the program
Whats New in version 10	Opens the What's New help file
Tools	
Catalog Manager	Tools to be used when
Maintenance Tools	instructed by Customer Support